

Data

Front wheel hub	107, 2nd version 2) 3)
Bolthole circle dia. "k" for attachment of brake disc	104
Bolthole circle dia. "l" for attachment of brake wheel	112
Flange distance "i"	75
Fitting "f" for brake disc	79.97 80.00
Permissible lateral play at the flange	0.03
Permissible vertical play at the disc wheel centre "d"	0.05

- 2) For type 107 from series begin, on types 114, 115 standard from July 1971. Replacement for first version.
3) If possible a vehicle should have front wheel hubs with the same flange distance on right and left.

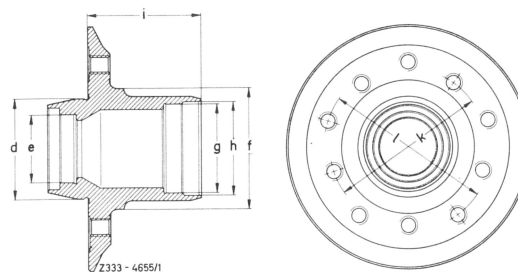


Fig. 1

Tapered roller bearings

Inner tapered roller bearing		Outer tapered roller bearing	
Designation	MB Part No.	Designation	MB Part No.
LM 670 48/10	000 981 58 05	LM 119 49/10	000 981 59 05

Radial sealing ring

Designation	MB Part No.	Comments
46 x 62 x 10/8	005 997 50 46	Radial sealing ring with sealing lip and additional dust lip. During assembly the space between the sealing lip and the dust lip should be filled with the prescribed grease (see "Filling the front wheel hub with grease").

33.1 Disassembly, Inspection, Repair and Assembly of Front Wheel Hub

Filling the front wheel hub with grease

Multi-purpose grease or anti-friction bearing grease	For prescribed grease type see "Fuel, Coolant and Lubricant Instructions" Page 267 and 265	
Total filling amount	In hub with bearing	In hub grease cap
approx. 70 gr.	approx. 50 gr.	approx. 20 gr.
Before beginning assembly of front wheel hub, weigh out the whole filling amount	Fill the roller cages of the tapered roller bearings well with grease. Also apply grease to roller face.	Fill approx. to flange edge.

Always use only specified quantity of grease!

Special tools

Fixture for pressing on the outer bearing races and the radial sealing ring	107 589 00 43 00
Puller for outer bearing race of inner tapered roller bearing	116 589 05 33 00
Removal punch for outer bearing race of outer tapered roller bearing	116 589 04 15 00

Commercially obtainable tools

Measuring stand	e.g. Messrs. Bosch, Stgt.-Feuerbach Order No. 0 601 980 001
Dial gauge A 1 DIN 878	e.g. Messrs. Mahr, Esslingen Order No. 810 St

Disassembly

1 Remove inner race and roller cage of outer tapered roller bearing from the hub.

2 Remove radial sealing ring and take inner race and roller cage of inner tapered roller bearing out of the hub.

3 Remove the outer race of the inner tapered roller bearing using the puller (Fig. 2).

4 Push the outer race of the outer tapered roller bearing out of the hub using the removal punch (Fig.3).

5 Separate front wheel hub from the brake disc ("Brakes, Steering" 42.1–220 or 42.2–220).

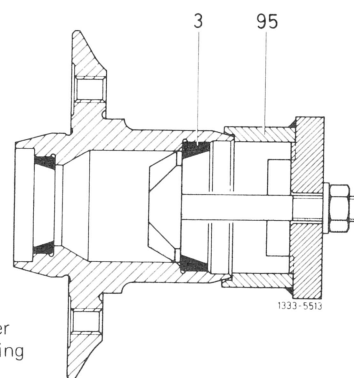


Fig. 2

3 Outer race of inner tapered roller bearing
95 Puller

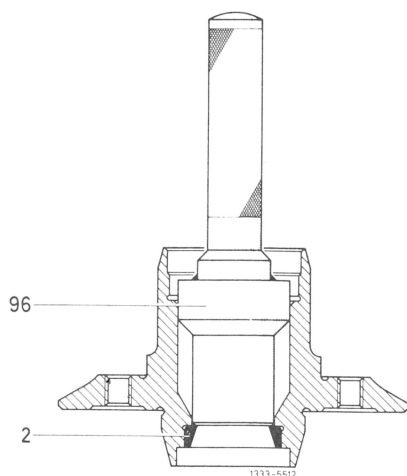


Fig. 3

2 Outer race of outer tapered roller bearing

96 Removal punch

Inspection and Repair

6 Check flange of front wheel hub for runout (Table and Fig. 1).

7 Check the threaded holes for the wheel mounting.

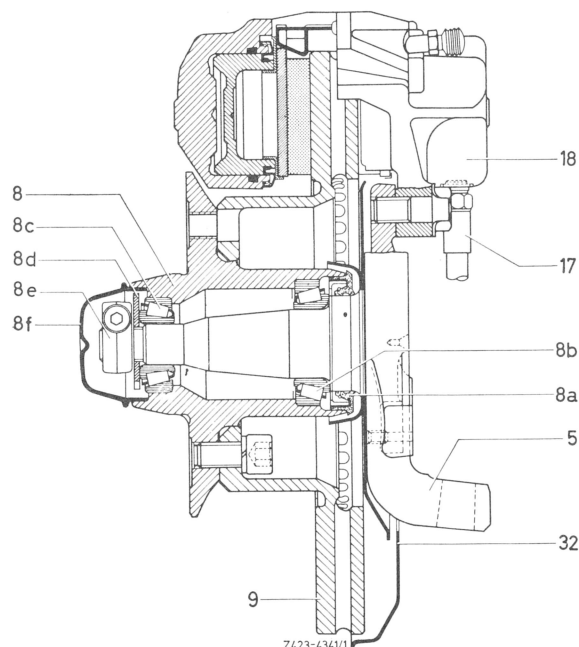


Fig. 4

5 Steering knuckle
8 Wheel hub
8a Radial sealing ring
8b Outer tapered roller bearing
8c Inner tapered roller bearing
8d Disc

8e Clamping nut
8f Hub grease cap
9 Brake disc
17 Brake hose
18 Brake caliper
32 Cover plate

8 Check tapered roller bearings and bearing seats in the hub.

9 Check and if necessary replace the disc (8d) which is ground on both sides (Fig. 4).

Assembly

10 Using the special tool, press the outer races of the tapered roller bearings into the front wheel hub individually (Figs. 5 and 6).

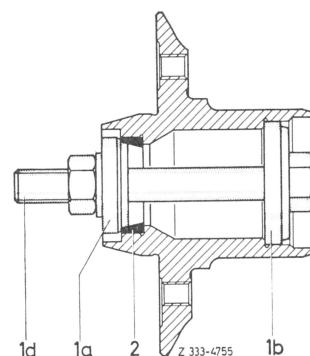


Fig. 5

1a Pressure plate for outer race of outer tapered roller bearing
1b Pressure plate for outer race of inner tapered roller bearing
1d Bolt with washer and hex. nut.
2 Outer race for outer tapered roller bearing.

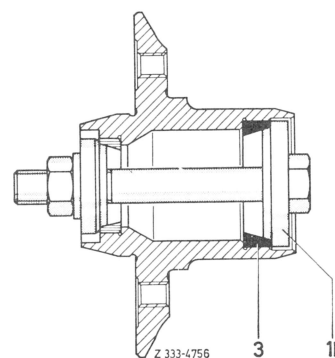


Fig. 6

1b Pressure plate for outer race of inner tapered roller bearing
3 Outer race of inner tapered roller bearing

11 Weigh out the prescribed grease amount of 50 gr for hub with bearing.

12 Fill roller cage of inner tapered roller bearing well with grease, insert inner race with roller cage into the hub and apply grease to the roller faces.

13 Fill the radial sealing ring with grease between the sealing lip and the dust lip, then press in using special tool (Fig. 7).

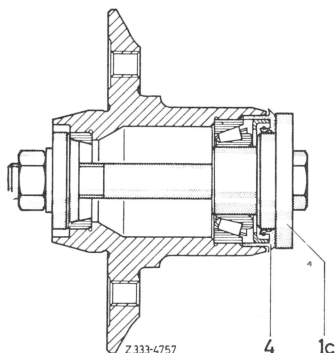


Fig. 7

1c Pressure plate for radial sealing ring 4 Radial sealing ring

14 Fill the front wheel hub with the remaining grease.

Note: If too much grease is used, the filling action causes the grease to overheat and it can lose its lubricant properties. The amount of grease must however not be too small, otherwise the tapered roller bearings might not be properly lubricated.

15 Install brake disc ("Brakes, Steering" 42.1–220 or 42.2–220).

16 Check the condition of the running surface for the radial sealing ring on the steering knuckle.